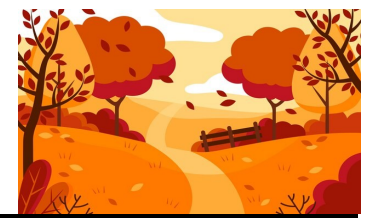







November 2024/Breakfast



Sunday	Monday	Tuesday	Wednesday	Thursday	Friday	Saturday
					1 <i>No School Parent Conferences</i> 	2
3 	4 <i>No School Teacher In-service</i>	5 <i>No School Election Day</i> 	6 <i>Milk Biscuit & Gravy Fruit</i>	7 <i>Milk Pancakes Sausage Fruit</i>	8 <i>Milk Cereal Apple Cinnamon - Toast Juice</i>	9
10	11 <i>Milk Sausage, Egg, Cheese Biscuit Fruit</i> 	12 <i>Milk Oatmeal Toast Fruit</i>	13 <i>Milk Biscuit & Gravy Juice</i>	14 <i>Milk Breakfast Tornado (French Toast / Sausage) Fruit</i>	15 <i>Milk Cereal Blueberry Pop Tart Juice</i>	
17	18 <i>Milk Bacon, Egg, Cheese English Muffin Juice</i>	19 <i>Milk Cereal Hash Brown Fruit</i>	20 <i>Milk Biscuit & Gravy Juice</i>	21 <i>Milk Cheese Omelet Toast Fruit</i>	22 <i>Milk Cereal Cinnamon Roll Fruit</i>	23
24	25 <i>Milk Breakfast Pizza Fruit</i>	26 <i>Milk Biscuit & Gravy Juice</i>	27	28 	29	30
<i>Thanksgiving Break 27th - 29th</i>						



- ◆ Cereal is available everyday.
- ◆ Breakfast is \$2.65 per day - \$13.25 for 5 days - \$53.00 per month (20 days).
- ◆ Extra milk is \$.45, Extra juice is \$.35.
- ◆ Students should not accrue charges on their account